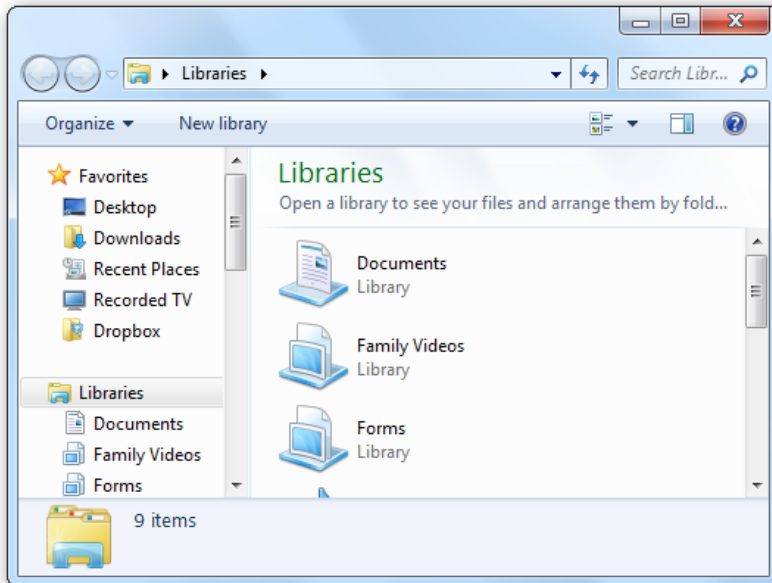


Set the Windows Explorer Startup Folder in Windows 7

When you open Windows Explorer from the Taskbar in Windows 7, it defaults to the Libraries view; many users including myself like to have an alternative such as Documents or maybe Music? Well follow our easy instructions and you will be able to do this yourself.



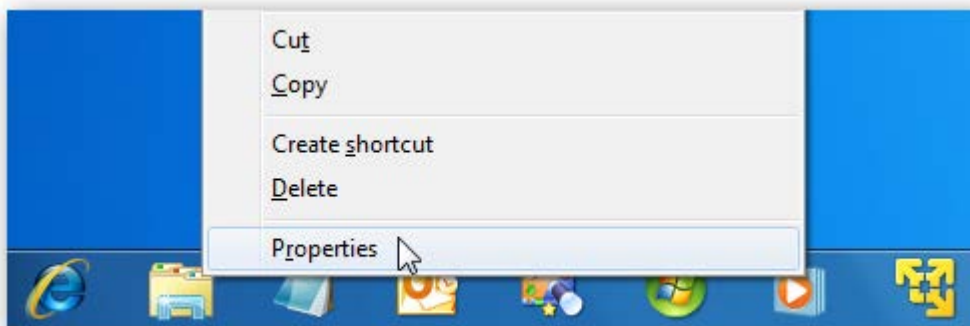
When you click on the Windows Explorer icon on the Windows 7 Taskbar, it's set to open to the Libraries view by default.

You might not use the Libraries feature, or want to set it to a different location that is more commonly used.

To set Windows Explorer Startup Location

To change the default startup location for the Windows Explorer Taskbar icon, make sure you have no Explorer windows open, if you have Explorer screens open close them all, hold down the Shift key, right-click the Explorer icon and click Close.

Now hold down Shift key on keyboard and Right-Click the Explorer Icon and select Properties, see below image.

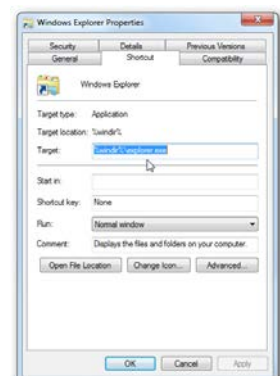


The Below Window will open:

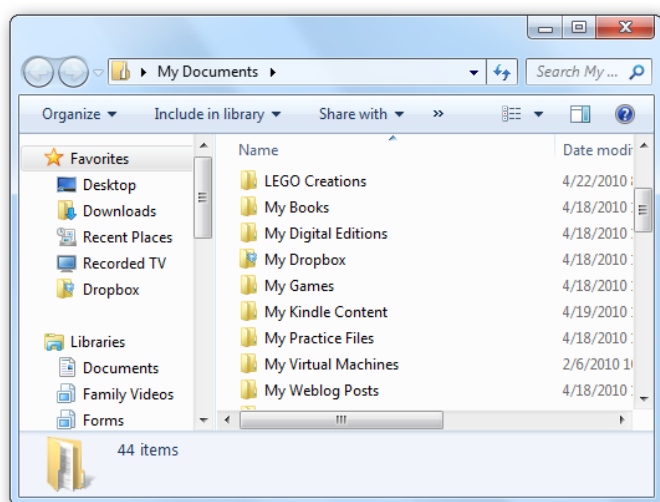
Windows Explorer Properties opens up and you'll want to click on the Shortcut tab so we can change the Target.

A common place you might want it to default to is your Documents folder; so to do that we need to enter the following into the Target field.

```
%SystemRoot%\explorer.exe /n,::{450D8FBA-AD25-11D0-98A8-0800361B1103}
```



Now when you open Windows Explorer from the Taskbar it defaults to My Document.



Another useful place is Computer, code below:

```
%SystemRoot%\explorer.exe /E,::{20D04FE0-3AEA-1069-A2D8-08002B30309D}
```

You can in fact use any Target by copying the Explorer Address Bar and pasting it into the dialog box as before as long as it has a Drive Letter at the start for example D: or and network location such as \\server\Shared or a Mapped Network Drive, be careful with these locations in the device is Laptop for instance as the Explorer Button will fail when not connected to the network.